

# Counterpart Insight™

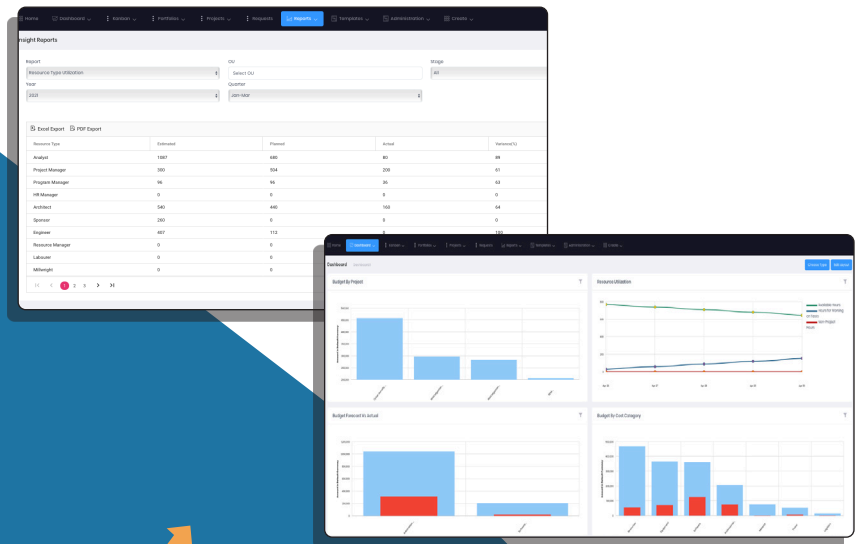
## Finance

Counterpart Insight™ is an intuitive Work Management Solution with optimised budget tracking and reporting tools to help your business stay on track.

### Work management solution for a CFO

As a steward for your organisation's financial portfolio and assets, many CFO's also act as strategic advisors to the CEO and play a key role in setting actionable goals.

Having an intuitive and efficient Work Management solution can help structure and drive business strategy to focus on your organisation's most important initiatives.



### How can Counterpart Insight™ help?

#### Cost management

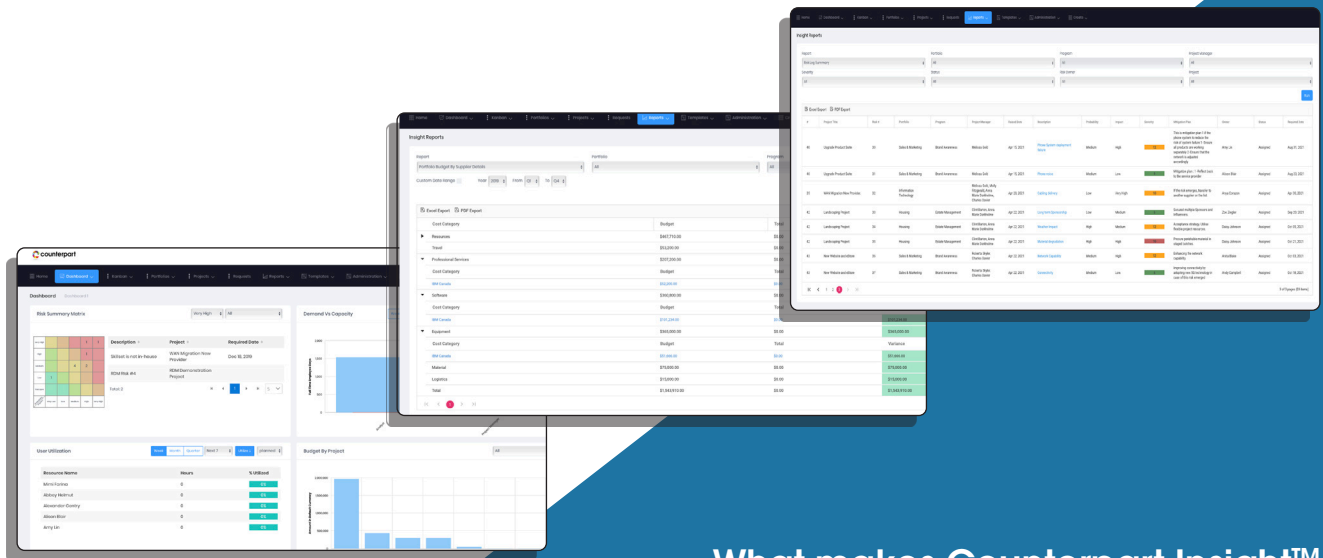
Counterpart Insight™ offers you a streamlined way to track and measure budgets and costs of all your initiatives and projects. Our configurable dashboards provide up to date financial information on your organisations ongoing and future projects or initiatives.

## Proving business value

Portfolio budget management is a tool that helps you track monthly actuals against budget so you can tightly manage your financial performance and ensure your business stays on track. You are also able to see a real-time overview of your financial health in the business budget overview dashboard, ensuring you don't miss a thing.

## Evaluate Strategic alignment

Quickly evaluate project performance across your whole portfolio. Clear reports provide real-time visibility on potential risks and overall quality of your initiatives and help you define the overall success of your organisation's strategies.



## What makes Counterpart Insight™ different?

Counterpart Insight™ offers simplicity, low implementation cost, and ease of use. We've designed Insight™ to help organisations that want a streamlined Work management solution. Offering all the project essentials: structured start-up, intuitive planning tools, rich collaboration, powerful reporting, dashboards, and customisable project workflow controls.

## Enabling Productivity Through Innovation

Counterpart Insight™ is a Work Management Platform that provides a simple and centralised method to manage and collaborate on programs and projects that are linked to strategic initiatives and objectives.



Learn more about how Counterpart Insight™ can help your organisation, contact us on **0330 113 3088**

[www.counterpart.com](http://www.counterpart.com)