



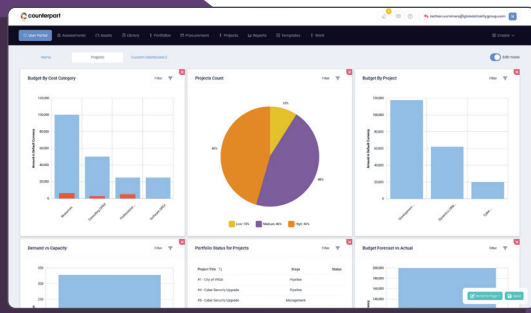
counterpart **Insight**™

Work Management Platform

Insight is a Work Management platform to unify your enterprise initiatives resulting in resource optimisation, work efficiency and real-time collaboration.

Actionable insights

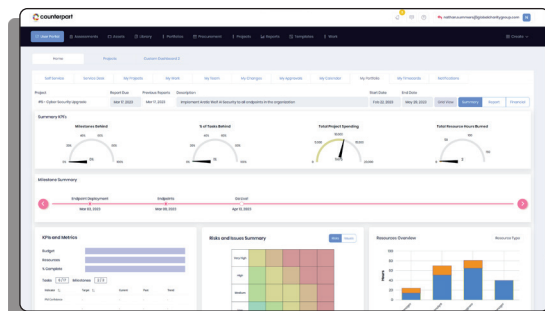
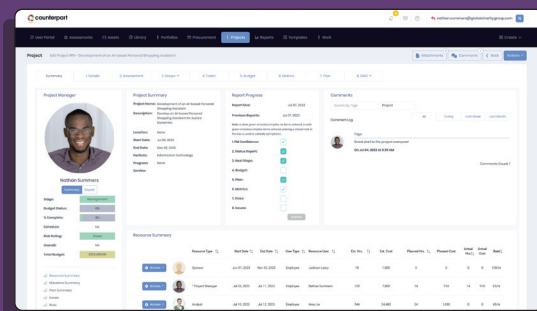
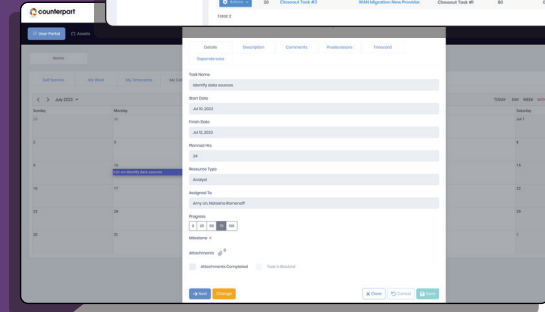
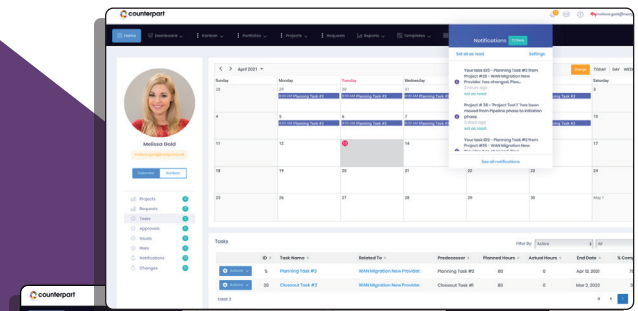
Comprehensive reporting is key to tracking your progress, budget, resources, quality and time. Counterpart Insight enables you to track your initiatives with simplified portfolio overviews, delivering real-time insight on financial resources and schedules.



Easily produce high-level overviews to show your progress or in-depth reports for presentation through role-based dashboards (Executive management, PMO, teams, sponsors, stakeholders and external partners) and share project and portfolio information.

Collaboration made easy

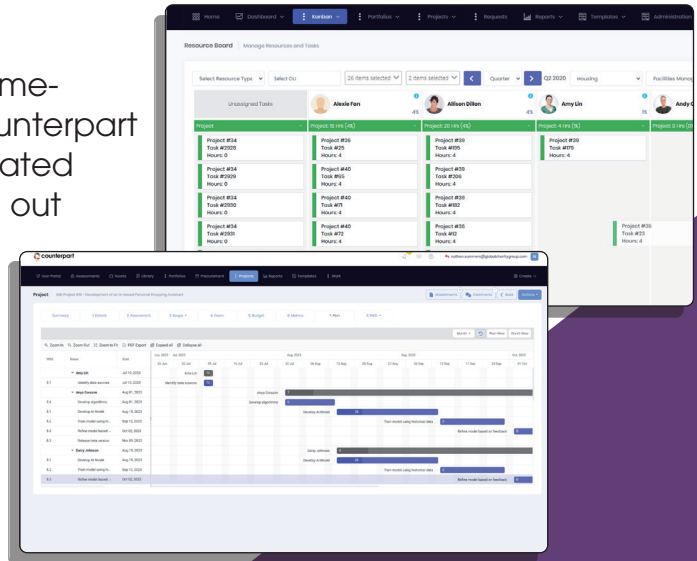
Collaboration within an organisation can be a struggle, especially, now that more of us are working remotely. Counterpart Insight enables you to stay on track with clear customisable dashboards that provide real-time updates of all your initiatives. Establish realistic expectations, clarify goals, reward innovation, and celebrate the team's successes publicly.



Insight™ Work Management Platform

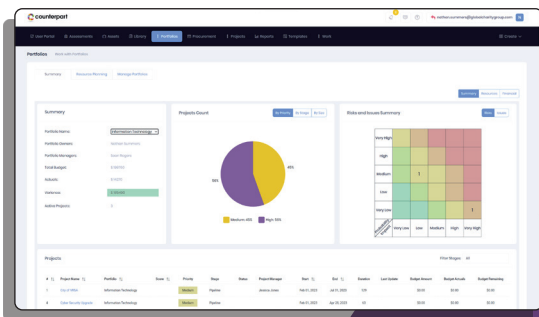
Effective resource management

Managing resources and tasks can be time-consuming at any point in a project. Counterpart Insight Resource scheduling tool is integrated with the planning function and will work, out of the box, across multiple projects. The Integrated Team builder function allows you to invite resources to tasks and check availability against individual calendars dynamically at the time of scheduling. Plus, dynamic timesheets allow you to keep track of tasks and update progress.



Project Portfolio Management

See the BIG picture! Insight delivers actionable intelligence through key metrics and KPIs across multiple portfolios, programmes and projects in real-time. Make the right strategic decisions and view accurate and relevant information through customisable reports and dashboards.



Efficient time management

Find the right resource at the right time, schedule tasks according to your plan and track your project initiatives from beginning to end. Counterpart Insight provides intuitive tools to help you optimise the time spent planning, tracking and reporting on all of your projects, with dynamic Kanban boards, real-time reports and integrated timesheets.

The screenshot shows a detailed task management interface with a list of tasks, columns for status, dates, and assignees, and various filters and search options.

Simple task management

Find your resources, assign tasks and track progress with clear dashboards or use our intuitive Kanban boards to plan, review and manage current and upcoming tasks across initiatives.



Learn more about how Counterpart Insight can help your organisation, contact us on **0330 113 3088**

www.counterpart.com