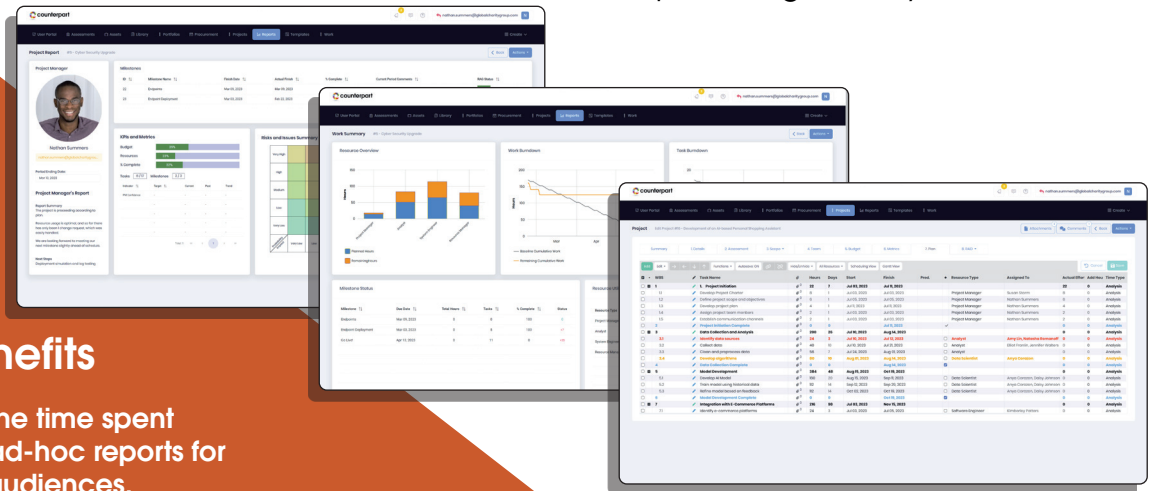


# Counterpart Insight™ for Project Managers

Automate and streamline recurring tasks associated with managing and reporting projects and initiatives.

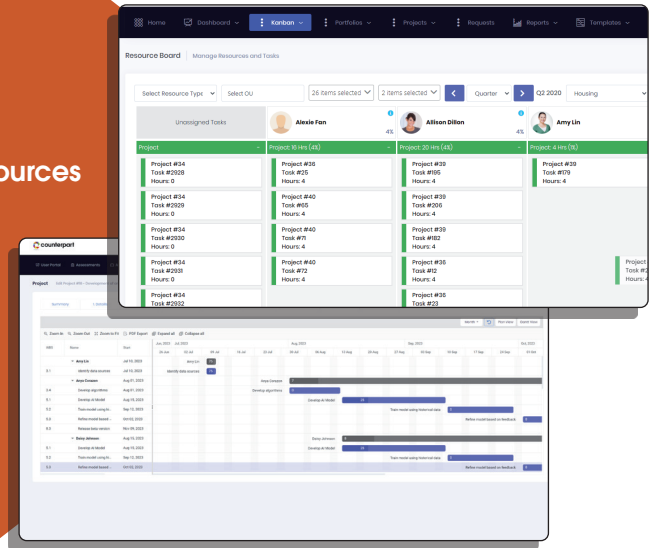
Our cloud-based Work Management platform streamlines the process of creating, planning and managing projects.

Insight makes it easy to collect and report key metrics and KPIs for reporting, and providing visibility to executives.



## Key benefits

- Recover the time spent creating ad-hoc reports for different audiences.
- Easily stay within your organisations' project governance framework.
- Streamline the process for securing project resources.
- Spend less time planning tasks and chasing resources for updates.
- Quickly capture and analyse new project ideas with Counterpart Insight's decision matrix and project sizing tools.
- Provide greater visibility for all project stakeholders, with real-time status and visibility.
- Track and report automatically on expenditure, resources, quality and time.
- Kanban boards to plan, review and manage current and future resources across initiatives.
- Share project and portfolio information through role-based dashboards.



## What makes Counterpart Insight different?

**Counterpart Insight** offers simplicity, low implementation cost, and ease of use. We've designed Insight to help organisations that want a streamlined Work Management reporting solution. Offering all the project essentials: structured start-up, intuitive planning tools, rich collaboration, powerful reporting, dashboards, and customisable project workflow controls.

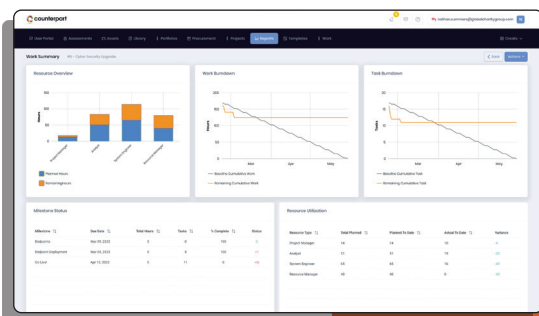
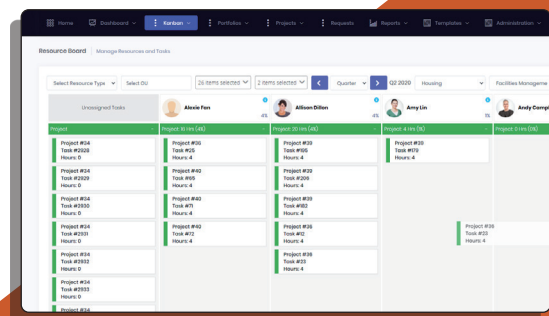
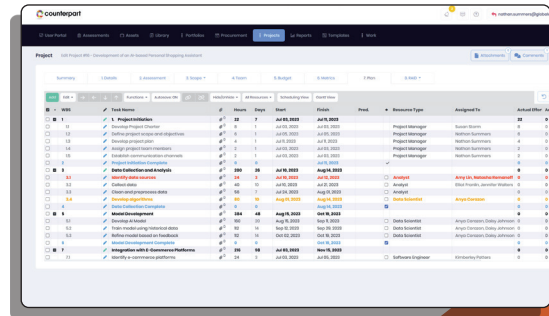
[www.counterpart.com](http://www.counterpart.com)

# Project Managers

## Key features

### Project Management

- Dynamic Task Updates & Notifications
- Lite Project Management
- Powerful Resource Tracker
- Powerful Planning and Task Management
- Capture & Track Project financials
- AI based resource scheduling
- Create bespoke KPIs and Metrics
- Enterprise Project Management
- Project Threshold Management

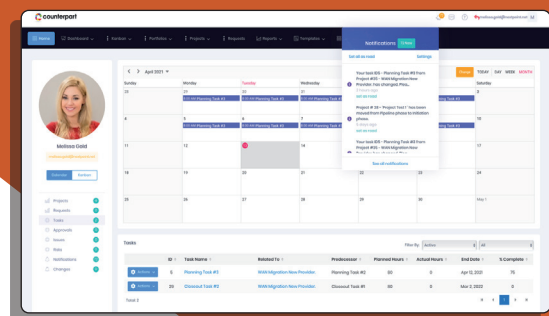


### Reporting Features

- Create bespoke KPIs and Metrics
- User configurable Widgets
- AI Project progress Reporting
- User configurable one page reports
- User configurable dashboards
- AI Portfolio & Program Status Reporting
- Bespoke Reports

### Collaboration Features

- Real-time collaboration
- Dynamic tasks updates
- Centralised Document Management
- Dynamic resource calendar
- Microsoft Teams Integration
- Microsoft 365 Integration



Learn how Counterpart Insight can help your organisation, contact us on **0330 113 3088**